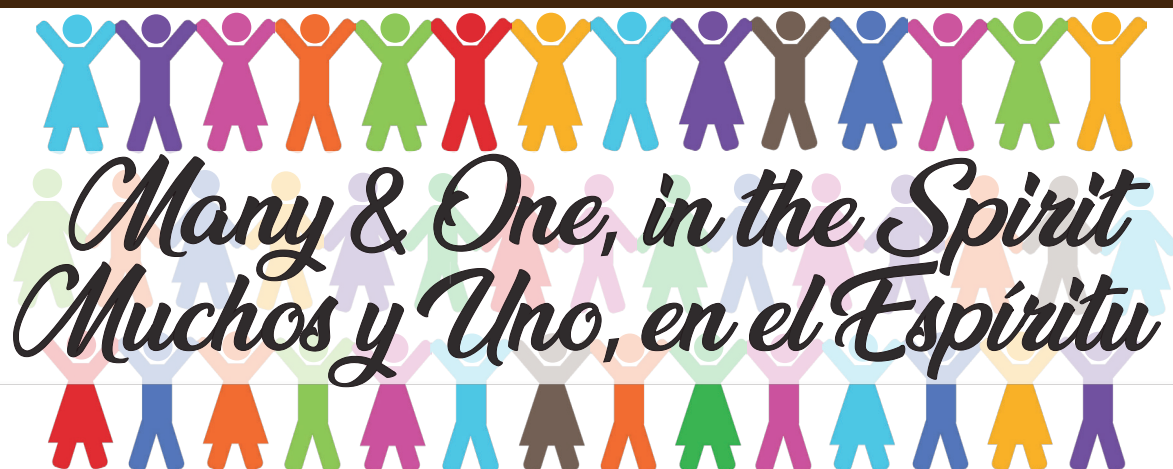




# 2026 STEWARDSHIP CAMPAIGN

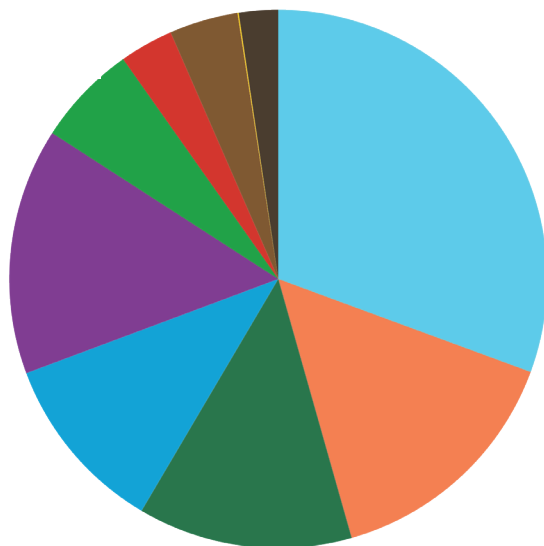


## YOUR PLEDGE MATTERS

Every pledge helps St. Michael & All Angels Episcopal Church carry out our values.

We: Seek justice Seek resilience Manifest joy Live in love

### WHAT YOUR GENEROSITY MAKES POSSIBLE



### GOALS FOR 2026

**200**  
PLEDGES

**\$700,000**  
PLEDGED DOLLARS

**50**  
INCREASED PLEDGES

**40**  
NEW PLEDGES



503.284.7141

Office@stmaa.org

stmaa.org

## SPIRITUAL FORMATION FOR EVERY GENERATION

We want to help everyone to develop their faith, from children to adults.

Godly Play and Liturgy of the Word, Episcopal Youth Community, Bible studies, retreats, and adult formation classes provide spiritual grounding for a life of prayer and service in the world.

Through your pledge we support and strengthen God's people for faithfulness: grounded in Scripture, nourished by the Sacraments, and sent forth to serve.



## OUTREACH, COMMUNITY PARTNERSHIPS, AND SERVICE TO OUR NEIGHBORS

St. Michael's is called to work for justice and mercy in the world. Through your generosity we:

- Connect and serve neighbors through weekly/monthly kitchen & closet ministries
- Support local and global community partners to multiply outreach,
- Accompany immigrant siblings as they seek to get established in a new place, and
- Open ourselves to new opportunities for service and work beyond the walls of the church.

Together, we seek justice, manifest joy, embrace resilience, and live in love.





## MUSIC & WORSHIP MINISTRIES

Music draws us deeper into worshipping God. Your pledge supports our rich music program, building on a legacy of excellent and inspiring music at St. Michael's. Music enriches our liturgy, lifts our prayers, and connects us to the presence of Christ in this world.

Liturgical Ministers of many ages serve us during worship. They gather for training, reflection, and community during each year, and delight in serving the community at prayer.

Week by week, music and worship ministries help us glorify God, joining our voices and hearts with the Church in every time and place.

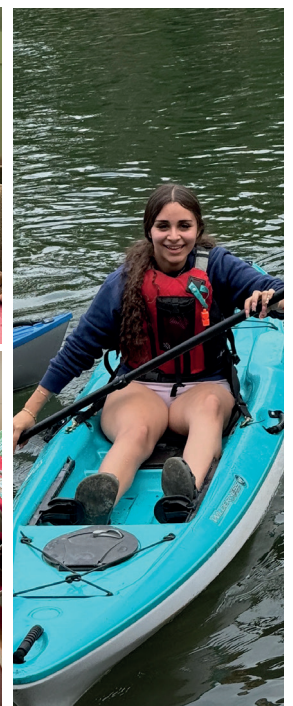


## SPIRITUAL CARE, LEADERSHIP, AND MINISTRY OF CLERGY

Your pledge makes it possible for St. Michael's to support two full-time priests.

Active and retired clergy offer compassionate care in difficult times. They train, commission, and support lay ministers to serve St. Michael's through a growing number of ministries of tenderness and care.

Through your generosity, clergy and lay ministers nurture our spiritual life and support the community through need, vulnerability, sickness, and death. We walk together and find our strength in one another.



# FAQ



**Q: DO I NEED TO PLEDGE AGAIN IF I PLEDGED LAST YEAR?**

**A.** Your yearly pledge can renew the commitment you make to this community. Each year's pledges allow us to build a budget for ministries, worship, and outreach.

**Q: HOW DO I DONATE TOWARD MY PLEDGE?**

**A.** Pledging is the first step, and then comes giving! Making your pledge sets your faithful intention and helps us plan. The next step is to make a plan for giving. In the coming year, you can give toward your pledge or special offerings by check, cash (marked in an envelope), or online, at whatever frequency is best for you.

To give online, visit [STMAA.org](https://STMAA.org) and click "Give Online" to set up your one-time or recurring gift. Your account will help you track gifts and will make future donations easier. You can choose to give via credit card or from your checking account. To give by check or cash, mark your check or envelope with your name, email address, and "2026 Pledge."

**Q: DOES THE EPISCOPAL CHURCH OR THE DIOCESE SUPPORT ST. MICHAEL'S?**

**A.** We enjoy connection, spiritual support, and learning resources through the Diocese of Oregon and the wider Episcopal Church. However, St. Michael's is responsible for funding our own ministries and expenses. Each year we also contribute a portion of our budget to support the ministry of the Diocese.

**Q: WHEN SHOULD I RETURN MY PLEDGE CARD?**

**A:** As soon as you have completed your pledge card, you may return it. Or you may hold onto it and bring it on In-gathering Sunday—November 16—when we will bring all pledges to the altar as signs of gratitude to God and generosity toward one another. Pledges received early will also be included in that day's blessing.

**Q: WHAT IF SOMETHING HAPPENS AND I CAN'T FULFILL MY PLEDGE?**

**A:** There is grace in pledging and giving. A pledge is a promise made in faith, based on your circumstances today. It is not a binding contract. If your situation changes, speak with one of the clergy; these conversations will be held in confidence and with grace.

**Q: WHAT FORMS OF DONATIONS ARE ACCEPTED TOWARD MY ANNUAL PLEDGE?**

**A:** In addition to gifts by cash or check, you may give through appreciated stock, mutual funds, IRA disbursements, or Donor-Advised Funds. These options may offer tax advantages—please consult your advisor. To learn how to make a gift to St. Michael's, contact Dave Reilly, Treasurer, at [bookkeeper@stmaa.org](mailto:bookkeeper@stmaa.org) or through the parish office at 503-284-7141.